

IMPROVING LIVES SUSTAINABLY

| CSR REPORT

H1
2020

KENYA STEPPING UP



THE LEADER IN WATER & ENERGY SOLUTIONS

For close to eight decades, Davis & Shirliff has been a trusted leader in water and energy solutions, providing tens of millions of customers in Africa in product segments including water pumps, solar equipment, boreholes, irrigation equipment, swimming pools, water treatment and generators.

With its headquarters in Kenya, the Group operates through a network of Kenyan branches as well as regional subsidiaries in Uganda, Tanzania, Zambia, Rwanda, South Sudan, DRC, Zimbabwe and a partnership in Ethiopia. Recognising that the provision of efficient water supply is essential for the region's economic development, Davis & Shirliff is committed to playing a major role in this vital industry by offering a comprehensive and competitive product range with regional availability and unrivalled technical and service support.



The Nairobi headquarters cover an area of 10,000m² with extensive warehousing, manufacturing, training and administration facilities from where products are efficiently distributed by the company's own fleet of trucks. The company is also ISO 9001:2015 certified to demonstrate the quality focus. Davis & Shirliff is on course to complete the development of the group's Tatu City Industrial Park plant, which will cover 20,000m².



20,000M²
Size of the company's new Tatu City Plant

The new distribution centre is expected to be operational later in the year. Davis & Shirliff plans to use the new facility to expand the company's network coverage across Kenya and open its distribution network further in other African markets through enhanced efficiencies and product availability. The company also plans to launch new products at the new facility.

Davis & Shirliff regionally distributes high quality equipment sourced from a number of industry leading companies from around the world as well as carrying out manufacture and assembly of various water related products. With a total complement of over 900 highly trained and professional staff, particular emphasis has been placed on infrastructure investment and the company is extremely well resourced with modern office facilities, a fully integrated ICT network and large product and spare parts stocks.



900
Number of staff at Davis & Shirliff



Our goal is to bring people and solutions together to solve the planet's challenges and empower communities



FOREWORD

Incredible things happen when you connect the previously unconnected. Lives are changed for the better and the world is made a better place. Through Corporate Social Responsibility, we help solve some of our most pressing challenges and unlock the potential of communities.

Welcome to the 2020 Davis & Shirliff CSR Report. As in the past, this year we will continue to see an accelerated trend of sustainability-focused corporate strategies and interventions through multi-sectoral approach designed to end poverty, inequality, climate change and environmental degradation.

This issue highlights how Davis & Shirliff is converging people, technology and resources to improve lives in Africa through cooperation and a resolve to find lasting solutions to existing challenges. We continue to deploy millions of shillings in resources and time to address these challenges.

Our goal is to achieve real impact on people, the communities they live in, the society and ultimately our planet to preserve it for future generations.

Enjoy the issue!

GROUP CHAIRMAN, DAVIS & SHIRLIFF

AlecDavis@dayliff.com

EDITOR IN CHIEF
Alec Davis

EDITORIAL DIRECTOR
Edward Davis

ASSISTANT EDITOR
Jos Musima

LEAD RESEARCHER
Nur Riday

GROUP CEO
David Gatende

PUBLISHED BY
Davis & Shirliff

2019 PROGRESS AND IMPACT



195,000

No. of beneficiaries

Employee involvement

961



17

Counties (Kenya)

Countries

3



87,450

Beneficiaries of improved access to water impact

WATER & ENERGY RE-IMAGINED

FIRST LADY COMMISSIONS MARA SOLAR-POWERED BOREHOLE, UNDERSCORES PROJECT'S CAPACITY TO CHANGE LIVELIHOODS

Hundreds of pupils in Olkuroto Primary school and residents of Mara division in Narok County now have access to clean and life-saving water after Davis and Shirtliff, in partnership with a donor, Fr. Francis Rodriguez, installed a solar powered borehole pump to support sustainable access to water and quench thirst for school going children and neighbouring community.



The borehole was officially commissioned by Kenya's First Lady, Margaret Kenyatta who also underscored the capacity of the project to change livelihoods.

"Your dream of lifting the livelihoods of women and promoting girls education has today been fulfilled. I am sure that the entire community will experience the life-changing impact of the projects that we have inaugurated today," said the First Lady.

Father Francis Rodriguez saw the community's need for water and resolved to approach Davis & Shirtliff's Corporate Social Responsibility department to craft out a lasting solution.

The partnership also extended through Pedro Arrupe Community, a Christian Church based in Nairobi. Through the strategic partnerships the stage is now set for a total transformation on educational performance of the School and livelihoods of adjacent households.



"The borehole will serve not only the school, but also 210 households in the neighbouring community as well," said Davis & Shirtliff Group CEO, David Gatende.

210

Number of households to be served by the borehole

250

Current pupil population at Olkuroto Primary Sch.

The borehole effectively quenches the thirst of area residents. "Olkuroto" in the Maa language means bare land. The area has for many years been characterised by harsh climatic conditions and acute water shortages that has dragged development efforts in the area. Olkuroto Primary School is located some 15 Kilometers from Talek Gate, Maasai Mara.

Few schools in the Maasai Mara have access to clean, adequate drinking water and safe sanitation facilities. This has resulted to low concentration levels in classrooms, low class attendance levels and an influx of preventable water related illnesses that have negatively impacted on learning activities.

Most affected people have been the women and the girl child, who are forced to walk many miles daily in search for the precious commodity. Often their source of water, from lakes and streams is not safe and can be contaminated with life-threatening bacteria and parasites.

Provision of water to the school is another life-line and adds to the milestones of a school that started from a humble beginning. When it started operations, pupils were learning under trees – which exposed learners to very harsh environments. But over the years, through the support of donors and worthy citizens, the primary school has grown classroom by classroom, with these positive developments contributing to rise in number of pupils from 52 in 2009 to a current population of 250 pupils.

NO MORE LONG TREKS AS KAJIADO'S ENGAMATA RESIDENTS GET LIFE-CHANGING SOLAR POWERED BOREHOLE



Residents of Engamata Matasia in Kajiado County used to spend about four hours a day fetching water with many forced to trek up to 10 Kilometers from their homes. This is however changing for better, following the installation of a solar powered borehole with capacity to support over 200 households.

“The project is expected to benefit close to 200 homesteads with the life-changing benefits to be felt mostly by women and children,” said Davis & Shirliff GM David Bolo.

The pastoralist community living in a semi-arid region characterised by scarce water resources considers Kumpa Center, some 6 Kilometers away, their closest source of water.

Access to fresh water has remained a rare commodity with available salty water sold at exorbitant prices. The County Government’s Shs3 per 20 litre container of fresh water is yet to reach many. This has left many women in the area spending most of their precious time thinking of how to meet family and cattle needs for clean and safe water on a daily basis.

At this rate, they have very little power in their hands to think how best they can play an integral role of transforming their lives and improving livelihoods.

In 2017, The County Government came to their aide and drilled a borehole for the community to ease this hassle. However, due to lack of sufficient funding, the unit was not equipped and residents were not benefitting as much as they expected.

A humanitarian, Ms. Jackline Namunyak who is also a resident in the area made a resolve to look out for a lasting solution that would relieve the community from perennial water stress and save women the burden of fetching water.

Davis & Shirliff through the Group’s CSR arm heeded to the call with supply and installation of a solar powered borehole pump and a 5,000 litre storage tank. Women and children in the community can now have enough time to focus their efforts on improving access and performance to education and other economic development activities.



5,000 LITRES
Capacity of storage tank supplied for residents.



**Water & Energy Solutions with you,
Everywhere You Go!**



**ARE YOU
INFORMED?**

**SUBSCRIBE TO THE DAVIS & SHIRTLIFF
NEWSLETTER**

INSIGHTFUL • AUTHENTIC • PERSONAL



THE IRONY OF A SCHOOL NEXT TO A DAM BUT WITH NO WATER - THE STORY OF GACABARI SECONDARY SCHOOL

Gacabari Secondary School with an enrolment of 102 students has for a long time experienced severe water problems. Access to clean and safe water has been a big challenge in this area, despite being in close proximity with the seven forks dams.

Students from this public school in the heart of Mbeere District, Embu County relied on a community shallow well located a kilometre away to meet its water needs. Students resorted to bringing their own drinking water to school.

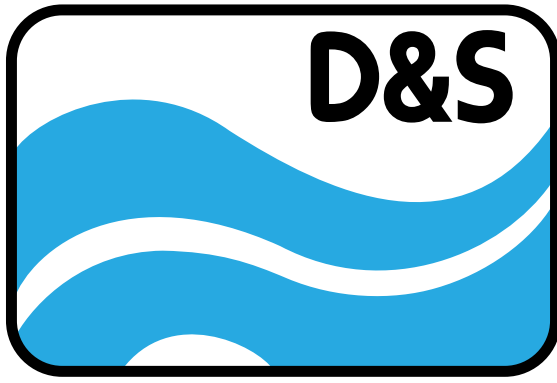
Due to the hot and dry weather conditions that prevail across the district especially in the month of July and an extremely rocky and dusty terrain, students were forced to fetch water for school use about a kilometre from the school at least twice a week. The closest tarmac road to the school is located 40km away, making it difficult for vehicles to access the institution, students relied on the community shallow well that had an installed water hand pump.



**“WE WERE SPENDING
more on water for the students
than on food”**

The school principal, Peter Ileri, said the exercise that yielded just 20 litres of water a day was laborious and time wasting for students. “We were spending more on water for the students than on food,” said Mr. Ileri.

This had a negative impact on students’ well-being and school’s learning activities and performance was disrupted. Due to lack of a water source in the school’s compound, the institution had no proper sanitation system that risked exposing students to outbreak of diseases.



**DAVIS &
SHIRTLIFF**

The Best

Bore
H₂O/e

***Pumping Solutions
Available!***

DOWNLOAD



D&S   APP AVAILABLE FOR



davisandshirliff.com

FROM HOLLYWOOD TO KIBERA - 'GLADIATOR' STAR CONNIE NIELSEN HUMAN NEEDS PROJECT PARTNERS WITH DAVIS & SHIRTLIFF TO EMPOWER SLUM YOUTH

Young men from the sprawling Kibera slums can now participate in gainful income generating activities and promise a sustainable future for their families. Already three local artisans have proved that when young people are armed with the right skills and have access to credit, many households can be lifted out of poverty.

The artisans are beneficiaries of an intensive two month practical technical training on water equipment and treatment technology at Kibera Town Center under Davis & Shirliff stewardship five years ago. Currently the three are working under Human Needs Project (HNP) housed at Kibera Town Center. The project offers them a platform to continuously hone their skills, gain new information and access to credit that enables them create new development opportunities for personal and community growth.



HNP was established in 2014 by Danish actor, Connie Nielsen to primarily provide basic services of clean water, sanitation and energy along with empowerment services of business skills training to people living in slums. Davis & Shirliff exposed the sponsored artisans to hands-on experience in all its product segments and finally offered them industrial attachment opportunities for one additional month for in depth exposure in their main areas of interest.

"As a result of this training the young men are now well on their way to an improved life through formal or self-employment," said Davis & Shirliff CEO David Gatende.

The latest Census data shows that more than a third of the country's youth eligible for work have no jobs translating to approximately 5.3 million people spread across the country. The high level of unemployment means more people are poor and are struggling to put food on the table.

Government data shows that the country had a poor population of about 17 million in 2018. Most of them reside in informal settlements and rural areas. The government has singled out technical and vocational training institutions as vehicles with a capacity to tackle youth unemployment.

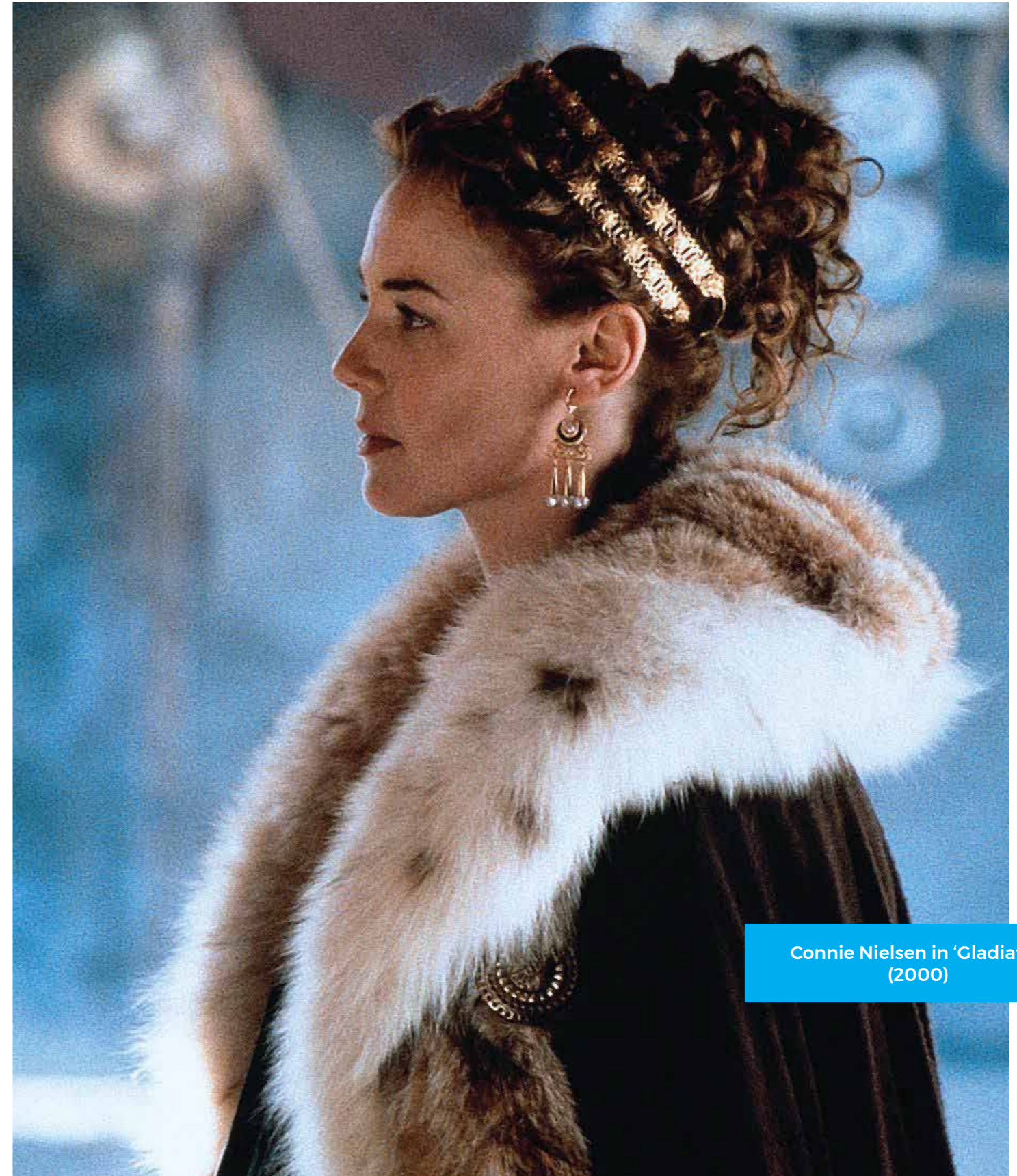


5.3 MILLION
Number of
unemployed youth
in Kenya

Davis & Shirliff is also playing a pivotal role in bridging the unemployment gap. The company supplied and installed equipment from virtually all product segments to support the HNP project piloting in Kibera through the firm's Corporate Social Responsible initiative.

This was in response to a request by the project's founder to support provision of vocational training services for youth as a catalyst to correcting run away joblessness and improving livelihoods. The centre has since grown over the years and is currently used as a gathering place to exchange ideas and a commercial water access point for most residents. Residents from the neighbourhood now enjoy access to clean and safe water at a minimal fee to meet their daily domestic needs.

This synergy has increased economic activities to improve lives in the area.



Connie Nielsen in 'Gladiator' (2000)

SAMBURU CHILDREN WILL NO LONGER SHARE A WATER POINT WITH CROCODILES

Since they can remember, teachers and pupils of Lpus Leluai Primary School in Samburu County have been treading on the most dangerous of grounds, sharing water with deadly crocodiles. This has now come to an end, after a multi-donor initiative saw a solar powered Dayliff borehole pump installed at the school, helping pupils, teachers and the neighbouring community to stay away from a crocodile-infested tributary.

Davis & Shirtliff Nanyuki through its CSR programme partnered with a number of donors namely SASAAB, Gary D. Magness Family Foundation & the Samburu Project to supply and install a solar powered Dayliff borehole pump in the school. Representatives from D&S Head Office, Meru, Isiolo and Nanyuki branches also joined children, teachers and parents during the launch and celebration event for this life-changing initiative.



Six years ago, an old water pumping system used by the community failed, pushing to the edge lives of many who depended on this critical water infrastructure. The school and the community had to contend with an unreliable water supply and related difficulties that turned the school calendar upside down. Pupils wasted lots of learning time, sometimes arriving late as others returned with injuries from the crocodiles.

Demand for water compelled Pupils and teachers to collect water from a tributary of Ewaso Ngiro River-the only accessible water point for livestock and wild animals. For a long time, the pupils and teachers put their lives on the line, battling with the deadly crocodiles over access to water at their only natural watering hole.

Several incidents have occurred in which children and teachers were attacked during water collection exercise. The most notable event occurred five years ago when a teacher lost his life through a crocodile attack as he tried to rescue two children who were in danger of being swept away by the raging waters.

“These factors illustrate the extraordinary need for clean water in this community,” said Davis & Shirtliff Director of Business Development and Marketing, Edward Davis.

Being the only water point for livestock and wild animals, the water is not clean and is dangerous for human consumption. Residents also risked contracting hygiene-related diseases because the water source is contaminated by animals mostly through excretion.



Lpus Leluai Primary School is located in the Samburu National Reserve in Samburu County about 25 kilometers west of Archer's post, Isiolo town.



KEEPING KIDS IN SCHOOL - NAIROBI'S KAWANGWARE PRIMARY SCHOOL CHILDREN DON'T NEED TO CARRY WATER TO SCHOOL ANYMORE

Structural repairs of a water pump at Kawangware primary school have helped more than 2,000 pupils to keep water-borne diseases at bay. For several months, after a pre-existing borehole stopped working, the school was hard pressed to find a sustainable water supply solution that could comfortably meet sanitary needs of its high pupil population.

But a volunteer working under PACE program and a pupils mentor at the school saved the situation from sliding to worse by bringing the need to the attention of Davis & Shirliff. Through the company's CSR program, D&S proceeded to lift the pump and repair the equipment after conducting a borehole camera inspection.

"The borehole now produces about 8000l/hr and at zero repair cost to the school."



1,000
Number of households
in Kawangware
positively impacted by
D&S efforts

With an average of 90 students per class, lack of reliable source of water had made it difficult for the management to sustain sanitation standards and other uses in the school. Inadequate access to water exposed the pupils to health risks such as contracting diarrhoea, a disease that claims lives of an estimated 1.5 million children under the age of five annually, according to UNICEF.

The situation at Kawangware had already attracted a host of water related diseases with a number of the pupils reportedly infected. As a result, pupils were forced to carry water from their homes every morning for general utilisation throughout the day.

Some of the critical needs include cleaning toilets daily, classrooms at least twice a week, cooking and cleaning in the school kitchen. The school has 70 toilets in its premises serving a 2,200 pupil population.

D&S efforts have sustainably impacted over 1000 households in Kawangware slum through support in provision of clean water and sanitation; ensuring pupils get quality education and promoting good health and wellbeing of pupils and households.

These efforts through partnerships have also helped in promotion of zero hunger, decent work and economic growth, development of sustainable cities and communities as well as life on land.



ROAR OF DAVIS & SHIRTLIFF GENERATOR RESTORES CRITICAL HEALTHCARE SERVICES FOR MANGU RESIDENTS

Residents of Mangu, Gatundu North Sub-County now enjoy uninterrupted access to critical healthcare services following the Installation of a 31Kva generator by Davis & Shirliff. People seeking outpatient and inpatient services have access to laboratory testing, dental, pharmacy and comprehensive care services at any given time.

"We are thrilled to have your support and this makes us partners forever. You truly made the difference for us, and we are extremely grateful," said Sr. Monica Mukui, Facility Manager.

Previously, most critical services were out of reach to many due to frequent power blackouts that interrupted operations at the dispensary. On a typical day, patients would only be able to access consultation services as frequent blackouts would render medical equipment inoperable. Unreliable electric power in the area made healthcare access more than a mere inconvenience to many, putting lives under risk



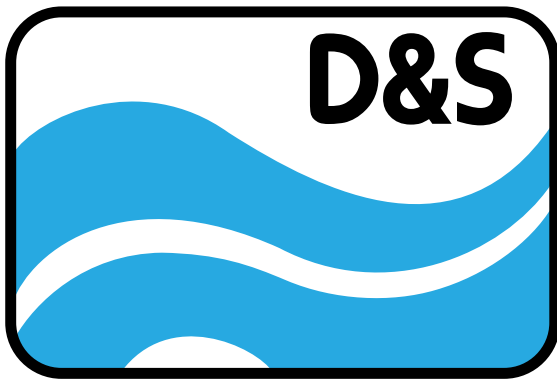
"On a typical day, patients would only be able to access consultation services as frequent blackouts would render medical equipment inoperable."

Majority of patients relying on the faith based facility were forced to seek critical services elsewhere exposing residents to costly medicare and delayed treatment. The facility needed a solution that could seamlessly communicate with installed medical equipment and eliminate frequent shutdowns. The management through well-wishing donors resolved to embark on a lasting solution that would ensure power issues are kept under control.

Sr. Monica reached out to D&S CSR, among other donors, through the Davis and Shirliff Thika branch for the installation of a 31kVA generator. Through this donation, the dispensary is now able to offer uninterrupted healthcare services for residents.



The dispensary started in 1960 by Franciscan sisters under the Catholic Archdiocese of Nairobi is now managed by the Assumption Sisters of Nairobi.



**DAVIS &
SHIRTLIFF**

Water & Energy

**know
H₂O**

***Water Pumps • Borehole Service
Swimming Pools • Generators
Water Treatment • Solar Solutions
Irrigation***

DOWNLOAD



D&S FLO

APP AVAILABLE FOR



davisandshirliff.com

LACK OF ELECTRICITY THREATENED TO CLOSE DOWN THIS SCHOOL. THE SCHOOL OFFERS HOPE TO CHILDREN WITH SPECIAL NEEDS



A few years ago, Tania Integrated Children Center found it very difficult to cope with high electricity bills from a power guzzling borehole pump. As a result the organisation which takes care of physically challenged and vulnerable children was unable to efficiently supply water to its farm and support daily water needs at the facility.

Life at the center became unbearable adding to the woes of children with impaired hearing, mentally challenged and young girls rescued from early marriages and those who escaped female genital mutilation.

Electricity was often disconnected and evening classes for the disabled children hampered. However, when founders of Tania approached Davis & Shirtliff's for a make-over through the field service department, lives of vulnerable children at the facility are changing for the better. We believe that the human spirit is one of ability, perseverance and courage that no disability can take away.

"The intervention of Davis & Shirtliff in this center is an important milestone and it is going to change the lives of our children," said GM of CSR David Bolo.



"ELECTRICITY

was often disconnected and evening classes for the disabled children hampered."

The Davis & Shirtliff CSR team moved to solarise the home's borehole pump with an aim of alleviating a strain of paying high electricity bills. To significantly benefit from renewable solar power, the company also constructed a solar roofed stadium where the center will be able to hold school events.

Now, the organisation has enough power to pump water to irrigate their farmland and light up the classroom for beneficiary children. Evenings at the school have been transformed from total darkness to full lighting and this is expected to impact on performance of pupils in terms of improvement in results from students.

The community based organization began its journey when the daughter of Jennifer and Joseph Kigunda - the founders of the center asked her parents to help her friend pay her school fees. Payment for school to support children grew from one child to another and many more followed thereafter.

The culture has sustained until today and is the reason Tania Centre has grown to serve 165 children, aged between 2 years and 17 years. The facility is based at Kona Baridi, Langata constituency.



ONE SIXTY FIVE
Number of children served by Tania Centre.

SPRINGS OF HOPE - DAVIS & SHIRTLIFF LIGHTS UP MARALAL'S SAFE HAVEN FOR ABANDONED CHILDREN

Davis & Shirtliff has helped orphans and abandoned children in Maralal Town to find a loving home with the installation of solar and water pumping systems. Orphaned children living with HIV at Springs of Hope children home now enjoy uninterrupted access to solar power and clean water supply.

Davis & Shirtliff in a partnership with IAS German made it possible by installing a solar system and a borehole pump on the school's ground. By August 2019 through a group at International Aid Services Germany, Davis & Shirtliff embarked on this noble initiative and managed to install a solar system for the buildings connecting classes, dormitories, dining hall and kitchen with sustainable power.

IAS Germany is a German-based humanitarian organisation whose aim is assisting in disaster areas and to bring aid and development into third world countries. The school accommodating up to 42 abandoned children now boasts of running water and lighting that ensures children have well-lit classrooms, dormitories, and enjoy their meals under a lit dining hall.



300,000
Estimated number of homeless children in Kenya

FORTY TWO
Number of children accomodated by the home.



As the system leverages a renewable energy source, it saves the institution from costly expenses that would have been incurred in electricity and water bills. Springs of hope is redirecting the cost savings towards support of its core objective; lifesaving care to the less fortunate children aged 20 years and below.

It also accommodates the early year's education system covering nursery education to grade three. A general overlook on the importance of education in the community has been attributable to the rise in abandoned children with many expected to look after cattle.

The area also has a high prevalence of young girls married off at a young age or subjected to female genital mutilation practices. Despite these challenges, the children at the home are confident, lively, curious and filled with hope for the future.

UNITED IN THE FIGHT AGAINST CANCER - THE ACT ON CANCER TODAY WALK

Kenya definitely has a growing cancer problem. We have about 47,000 new cases and 33,000 deaths annually, a huge figure for a country with a population of 50 million. As the world and the country comes to terms with the proliferation of cancer cases and recent cancer-related deaths of 3 prominent Kenyans, cancer foundations and societies in Kenya were looking to tell a different story. Last year saw the cancer-related deaths of Bob Collymore, CEO of telecoms giant Safaricom, Governor Joyce Laboso and Kibra MP Ken Okoth.

KENYA'S CANCER SITUATION IN NUMBERS



The year highlighted not only those well known to the public, but also those living below the poverty line and forced to choose between supporting their families or getting treatment for this disease. The societies organized a peaceful march to petition for the zero-rating of all cancer medication and equipment. Davis and Shirliff donated 42 cartons of bottled water to support the promoters of this noble cause.

Like many other developing countries, the increasing number of cancer patients is putting additional strain on health services. It is estimated that 70 to 80% of patients diagnosed with cancer in Kenya are at advanced stages, with high rates of misdiagnosis and inadequate screening hindering early detection.





66-YEAR OLD BOREHOLE THAT'S THE HOPE OF A COMMUNITY

AMOS BOREHOLE WATER PROJECT

The Amos Borehole Water Project is a community-based project located at Kabatini Ward, Bahati Subcounty, about 15 kilometers from Nakuru town. Drilled in 1954 during Kenya's State of Emergency, the borehole has been serving more than 300 homes. Only a few of the households have piped water, and a majority of homes depend on one water kiosk from a nearby secondary school with 700 students which is dependent on this same borehole.



Finally, in September 2019, the CBO approached D&S Nakuru for assistance through the Group's CSR program. Davis and Shirliff revived the pumping system and the community of over 2,100 people once again had access to clean and safe drinking water.

2,100
Approximate number of people served
by the Amos Borehole Project

Due to an electrical fault, the water project found itself with two broken down pumps in the month of April 2019. This caused a serious shortage of water for several months as the community only managed to raise a portion of the funds required to repair the pumping system.



HOT OR COLD WATER: THE DIFFERENCE BETWEEN A BATH AND NO BATH - COMPASSIONATE HANDS FOR THE DISABLED

Depending on who you are, showering with cold water is not always fun, especially for young children. And that's what was happening at Compassionate Hands, a rehabilitation and rescue-center for abandoned children living with disability. The center has been in existence since 2008 and is currently caring for 98 children. Kenya has an estimated 1.92 million children aged below 14 years living with disability.



1.9MILLION
Estimated number of children living with disability in Kenya aged below 14.

Compassionate Hands, as the name suggests, works to give the children a healthy and safe environment just like any other child in Kenya. Previously, taking baths and any medical therapy that involved sanitation would be done with cold water - which resulted in a lot of resistance from the children. They therefore needed hot water without accruing high electricity bills. Davis & Shirliff installed a solar water heater which supplies the center with adequate hot water to cater for the children's needs.



HOW AN OLD CUSTOMER PARTNERED WITH DAVIS & SHIRTLIFF TO EMPOWER MENTALLY CHALLENGED CHILDREN AT THE DON ORIONE SPECIAL SCHOOL

Don Orione Special School is a mixed public boarding school located in Kiharu constituency, Murang'a County in Kenya which offers education to mentally challenged children aged between 8 and 20 years.



Following years of hardship due to lack of water within the institution, a well-wisher who is also an old Davis & Shirliff customer - Drilling for Life - drilled a borehole and donated a storage tank. He then approached Davis & Shirliff and through the CSR program a solar powered Dayliff borehole pump was supplied and installed at the facility.



Access to clean water within the school will ensure improved health, sanitation and safety especially for the girl students whose time will now be channelled to useful educational activity. A team from Davis & Shirliff Head Office represented mainly by Sales Commercial Department handed over the project in a colorful ceremony spent time playing, singing and dancing with the joyful students.



Home of Hope is a children's home run by Charity sisters and is located in Marsabit town. The home operates as a rescue centre for orphans, abandoned and less fortunate children and vulnerable mothers. Currently the center cares for twenty children and seven mothers.



Home of Hope harvests rain water during the rainy season and stores it in tanks to last them through the dry seasons. The stored water remains in the tanks for several months, running the risk of getting contaminated.

Before engaging with Davis & Shirliff, they would boil their drinking water and store in containers which then brought on the risk of re-contamination. Davis & Shirliff through the Marsabit branch, donated four mineral water pots. The units will provide them with clean safe drinking water and help them save the funds they would have otherwise spent on fuel.



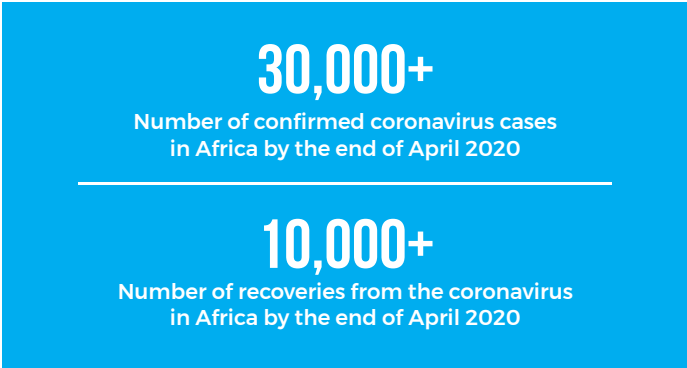


STEPPING UP THE FIGHT AGAINST THE CORONAVIRUS IN KENYA'S POOR NEIGHBORHOODS

More than two months after Egypt became the first country in Africa to confirm a coronavirus case, the outbreak reached almost every nation on the continent of 1.2 billion people with at least 27,600 confirmed cases. Of Africa's 54 countries, only two have yet to report a case of the virus: Comoros and Lesotho. African countries have imposed a range of prevention and containment measures against the spread of the pandemic.



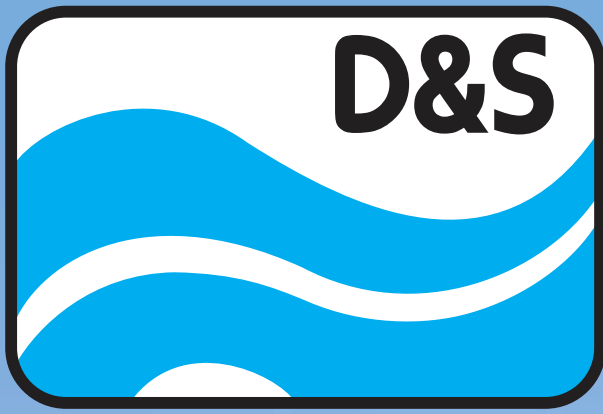
Davis & Shirliff partnered with the Standard Group, Menengai Oil Refineries, Access Afya and Kentainers to set up 10 hand washing stations in Nairobi's densely populated informal settlements.



Frequent thorough hand washing with soap and water is one of the most effective ways of preventing the spread of infectious diseases including covid-19. The first of these installations was completed in Kiambu along one of the settlement's busiest streets. Since a large majority of houses in the area do not enjoy a reliable supply of clean water, the hand washing station will be of critical importance in the fight against the spread of the covid-19 virus.

With this initiative Davis & Shirliff has added to its commitment to support the government's efforts to control the pandemic while also bolstering the company's raison d'être of sustainably improving people's lives.





DAVIS & SHIRTLIFF

know **H₂O**w through experience

BUY ONLINE

STAY SAFE

SHOP EASY

HOME DELIVERY

The full range of Water Pumps, Borehole Services, Swimming Pools, Water Treatment, Solar, Generators and Irrigation equipment.

HELP LINE: 0711 079 000

Try our Davis & Shirliff FLO App



D&SFLO

Download on the
App Store

ANDROID APP ON
Google play

For Comprehensive Product Information, Sizing Tools, Service Support, Spares Directory and much more.



davisandshirliff.com

WATER IS OUR WAY OF LIFE - THE MAA PEOPLE



1,346
Number of households in Kisargei

10,000
Cattle population in Kisargei



The Kisargei borehole is located in Laikipia North, sandwiched between the Segera ranch and Olpejeta conservancy. Kisargei is home to 1,346 households comprising of the Samburu-speaking community of Laikipia County. In addition to the large population of the people living here, this land is also home to over 10,000 cattle.

The preservation of culture is this community's pride and heritage and it allows them to live in harmony with each other, sharing resources and banding together for projects that positively impact the overall well-being of the land they call home.



MOTHERS AND DAUGHTERS 15KMS TREK IN SEARCH OF WATER

For many indigenous Maa communities in Laikipia County water is not just their means of survival but also it is a pillar for their way of life. The Kisargei community has 1,346 households as per 2019 population census translating to a population of 8,076 people. The main source of water has been Kisargei Community Borehole and occasionally seasonal streams around the area during rainy season.

The inhabitants of the area are mainly the Samburu and the Maasai Communities. The Kisargei Community Borehole was constructed in April 2014 by Laikipia North constituency development fund (CDF), where water was found at a depth of 120 meters. This borehole has been fully functional for all five and half years serving this community without fail up until the 2nd of January 2020 when it broke down.

This resulted in a great period of hardship for the community as the dry season had just set in. Without this borehole, mothers and daughters are forced to trek 15km away to get water in the nearby Ngare Ngiro River. The local Kisargei Primary School is testament to this hardship exhibited by extremely low school attendance.



IN COMES DAVIS & SHIRTLIFF

On 23rd January 2020, the former Member of Parliament for Laikipia North, Mathew Lempurkel, tabled the needs of the community to the D&S CSR program, for consideration by the CSR committee. The Kisargei Water Committee raised a small contribution from the borehole kitty and the CSR program covered the rest of the cost for reviving of the borehole.

This project has improved access to clean drinking water hence reduction of water-borne diseases in the area. Time used in accessing water has now been redirected to constructive activity. The school going children of Kisargei community can now concentrate in school, without having to trek during school hours in search of water. The availability of water also fosters a peaceful co-existence between the community and neighboring private ranches. During the drought, in acts of desperation, the community sometimes trespasses into the private ranches in search of water for their livestock and families.

WHAT KSH 1 MILLION CAN DO FOR A COMMUNITY



The Longido Community is located in Namanga and has a population of 2,500, some of them from nomadic families with an estimated livestock population of 25,000. In 2010, a non-profit organization called Well Aware World, drilled a borehole for the community.

At the time, water-borne diseases were a big problem for the community in Namanga and the drilling and equipping of this borehole resulted in controlling these diseases.



THE JOURNEY

In 2016, they approached Davis and Shirtliff for support in solarizing the borehole system. D&S CSR donated and installed solar pumping equipment worth \$10,000 which greatly improved the lives of the residents who now had a pumping system that not only saved them the 10km trek they previously endured, but was also cheaper to run, making it a sustainable solution for the community.

2,500

Population of Longido, Namanga



THE NEED

Unfortunately the borehole pump broke down and the pastoralist community was not able to come up with the money required for the replacement of the same.



DAVIS & SHIRTLIFF SOLUTION AND IMPACT

The pump was brought to the workshop for repairs and it was determined that a new pump was required. D&S CSR, in partnership with Grundfos, donated the pump and re-installed it for the community at no cost.

MACHAKOS SCHOOL FOR THE BLIND



Machakos School for the Blind is a mixed boarding primary school with a student population of 142. The school has young children who require warm water for their baths. Davis & Shirliff received a request to donate a solar water heating system.



Davis & Shirliff Machakos branch installed a 300-litre solar water heater system in the school, affording the young learners the opportunity to enjoy a warm bath.



142
 Number of students accomodated by
 Machakos School for the Blind

300 LITRES
 Capacity of solar water heater system
 supplied to the school by Davis & Shirliff



MOTHER OF MERCY CHILDREN'S HOME

Mother of Mercy Children's Centre is a children's home that cares for 70 orphans and abandoned children. Its primary caregivers are two nuns who left their home country, India, to set up an orphanage in Kenya. The home, through donors and well-wishers, drilled and equipped a borehole but consistently struggled to keep up with the power bills that were in excess of KShs 40,000 every month. On a modest budget this amount would eat into a significant portion of funds meant for the upkeep of the children.

KSH. 40,000
Average amount in power bills the center paid a month



Davis & Shirliff Kitengela Branch supplied and installed solar power for the borehole. A special mention of D&S customer Aquamax Solutions Services who donated the solar panel support structure. The home is now able to grow food for their own use and for sale, as well as have enough water for the children with no power bills.



SAFE HOUSE



The Naivasha Safe House is a shelter for children in need of urgent care and protection. Most of the children are saved from abuse, abandonment and other inhuman acts by their care givers. The home currently has 29 children, both boys and girls aged between one month and sixteen years.

The home approached Davis & Shirliff CSR through the Naivasha branch, requesting donation of a solar water heating system. Prior to the donation, the home was using firewood to heat water, which is not only expensive, but also pollutes the environment.

TWENTY NINE
Number of children sheltered by the Safe House

Davis & Shirliff donated and installed a solar water heating system, complete with a booster pump and pressure tank. This will go a long way in creating a healthy environment for the children, using eco-friendly means.

FROM INFESTATION TO IRRIGATION - SOLACE EDUCATION CENTRE

Solace Education Centre is an integrated school that provides primary level education and also offers spiritual nourishment to the surrounding populace, most of whom live in abject poverty. Located in Hademu Village, Kilifi County, Kenya, the centre serves about 350 children. For years the school and locals depended on an algae infested and heavily polluted seasonal pond for their water needs and whenever it dried up they would have no option but to make a 10km trek to Pala Kumi centre. In 2018 a donor drilled a borehole in the school but both the school and the community lacked the funds required to equip it.

350
Number of children served by the centre

The school then reached out to Davis & Shirliff for support. Davis & Shirliff supplied and installed a solar-powered Dayliff borehole pump and as a result assured the school and over 500 households of access to clean and reliable water. The school now intends to start an irrigation project to support their feeding program and also looks forward to reducing water-borne diseases. A team from the D&S Coast Cluster handed over the project in a joyful and colorful ceremony.





SOS CHILDREN'S HOME — HELPING KIDS ENJOY A FAMILY SET-UP

SOS children's villages Kenya currently take care of over 10,000 children and youth both in their villages and community programs. There are 5 villages in Kenya with each village comprising 15 houses with 8 – 10 children in each house. The model allows for the children to experience the family set up despite their previous unfortunate circumstances.



10,000+

Number of children and youth taken care of by SOS Children's Villages Kenya

SOS recently approached D&S CSR for the installation of 2 solar water heaters in their villages in Nairobi Buruburu and Mombasa. The solar water heaters will offer the children hot showers, at no cost, while allowing the village to save money that would have otherwise been used on firewood.



THE HOME BY THE RIVER - UPENDO KIDS VILLAGE

Upendo Kids Village is a children's home located near Sagana river, Murang'a county. The home cares for 45 children but has the capacity to house at least 100 orphans and neglected children. The home is built on a five acre piece of land conveniently located near Sagana River.



The home approached Davis & Shirliff CSR in Westlands with a request for a water supply system to pump and store water from Sagana River. The home previously used the water supplied to them by the local Water Service Provider but it has been very expensive to sustain based on their increasing child capacity. The municipal water was also very unreliable and was not able to sustain the home's farm. Davis & Shirliff donated and installed a submersible pump, complete with piping from the river and a 3000-litre water tank.

FORTY FIVE
Number of children cared for by Upendo Kids Village

3,000 LITRES
Capacity of the water tank supplied to the home



SOS CHILDREN'S HOME - UGANDA



SOS Children's Villages began its work in Kakiri in 1991. In recent years, it has expanded its family strengthening programme in the region so as to reach as many struggling families as possible. The aim is to alleviate hardship and maintain family stability so that children will be safe and protected and grow up in a loving home.

29

Number of years SOS Children's Villages have been operational.

The SOS Social Centre in Kakiri ensures that children have access to essential health and nutritional services, as well as education. Davis & Shirliff Uganda donated and installed a borehole pump as well as food stuff. The team was led by Linda Tata, HR Manager.

WAMUKISA YOUTH CENTRE

Davis & Shirliff Uganda visited Wamukisa Youth Centre (WYC) located at Kitala village near Kisubi. The centre was opened in 2005 to care for neglected teenage mothers, babies and expectant teens and has 17 staff members. It has cared for over 500 mothers and currently has 20 babies and 15 expectant teens.

Davis & Shirliff installed 1kW solar system and donated food stuffs and clothes.



1,000W

Power output of the solar system donated to the centre



TWO THOUSAND STUDENTS, NO WATER - THE STORY OF AMANI PRIMARY SCHOOL

At the heart of Kenya's Coastal City of Mombasa, is Amani Primary School in Changamwe. To the East, North, West and South, the school is surrounded by at least seven slums that together send children to this visibly constrained educational facility.



45

Number of teachers at Amani Primary school.

Amani has 2,015 students; an average of 98 for each class. Until recently, a hand-dug well with no pump was the only source of water for the school. Its children would be required to bring water from home in jerry cans. Considering the large number of students, lack of running water in the school left the children exposed to water-related diseases.

Davis & Shirliff CSR, through Davis and Shirliff Mombasa Downtown branch, donated and installed an electric well pump in September 2019. This continues to ensure access to safe and clean water for the more than 2,000 students and 45 teachers in the school.



CLINIC THAT IS THE HOPE OF AFRICA'S LARGEST SLUM

Kibera South Clinic was inaugurated in 2013 as the 2nd clinic in Kibera to offer free healthcare. The center offers comprehensive basic healthcare and maternity services integrated with the management of chronic diseases like HIV, targeting one of the most vulnerable populations in Nairobi. It is also a center for victims of sexual violence.

Services such as health education sessions, counseling, and social support are also offered to empower patients to manage their own health. The clinic was set up by MSF, an international humanitarian medical organization, which gradually handed the management of the clinic over to the County Government.

Poor hygiene and sanitation conditions in the area cause illnesses such as respiratory infections, diarrheal diseases and skin diseases. It is essential that this group of vulnerable people have access to clean water and sanitation.

5,000
Number of patients who attend the clinic per month

In 2019, the borehole that was donated by MSF broke down, posing a great challenge with access to water in the clinic. This greatly affected operations in the clinic and standards of sanitation became difficult to maintain. The clinic then approached D&S through the Corporate Social Responsibility Department, requesting for assistance through the CSR program.



25
KGs of Chlorine donated by D&S to the clinic

Davis & Shirliff revived the borehole and restored it to its initial glory, serving over 5,000 patients who attend the clinic per month. D&S also donated 25kg of chlorine, which the hospital uses in disinfecting all its surfaces, during the fight against the Covid-19 pandemic.



PROVIDING WATER TO A THOUSAND STUDENTS

Along Juja Road Nairobi, is Kiboro Primary School. The school has a student population of 1,047 students and 43 faculty members. The school is set up on a small compound and the students sit about 130 per class. Recent long rains experienced across Kenya caused the collapse of some of their classes and the school is yet to get funding to construct newer sturdier classes. The school also runs a feeding program.



The school has been experiencing a water shortage problem since August 2018 due to a non-functional borehole. The borehole was drilled many years back by Athi River Water Services Board. However, when it broke down in 2018, the students were forced to rely on the county council water, which is minimal at best. The consequent effects of this shortage include reduced concentration span for the students, accumulated dirt in the classes and a marked decline in school academic performance.

They approached Davis & Shirltiff CSR through a volunteer teacher at the school. Davis & Shirltiff then assessed the borehole and repaired its 11kw motor at no cost. This has since improved access to clean and safe water for the 1,047 students. Subsequently, hygiene has improved and the environment is now more conducive for learning.

11,000W
Power output of the motor replaced by D&S

Nimechagua

DAYLIFF

Great Pumps, Great Value!



THE **WIDEST PUMP RANGE** AVAILABLE
FOR **EVERY APPLICATION** IMAGINABLE!

The Brand of



**DAVIS &
SHIRTLIFF**

know H₂O through experience

dayliff.com

DOWNLOAD
THE DAYLIFF APP



A SCHOOL'S DESPERATE ATTEMPT TO KEEP WATER FLOWING IN A VERY DRY AREA



Kalama area of the Eastern part of Kenya has little rainfall every year. Food shortage and consequently hunger are common in this community whose members trek long distances in search of water. Yet this is where Kisueni Primary School is located and where 500 learners advance their education each day.

Previously, the children of Kisueni Primary School would fetch raw water from River Kyetololo. This led to rampant cases of water-borne diseases. To curb this, the school installed gutters on their roofs in order to harvest rain water. However, the roofing sheets were in dismal condition and the water-borne diseases persisted.



500
Number of learners at Kisueni Primary School

WELL AWARE
Organization that partnered up with D&S on the improvement of the school's water systems

The school then approached Well Aware, an organization that has partnered with Davis & Shirliff CSR severally on community projects, to offer assistance with regards to water and sanitation. Well Aware then tabled the request to Davis & Shirliff, where a partnership was established to ensure that the children of Kisueni primary got access to clean water.

Well Aware International replaced the rain water harvesting system with a completely new one, and Davis & Shirliff donated UV purification units to ensure that the water harvested was treated before consumption. Initially, when students collected water from the river, class attendance was low with kids often getting sick from the contaminated river water.

The school is now hopeful for continued improvement in education and general well-being for the students. We are excited to watch them succeed!

COVID-19

PREVENTION & MANAGEMENT



Wear mask



Wash hands



Boil your food



Avoid contact



Use soap & Antibacterial gel



Cough on your elbow



Keep your distance



Regular sleep

DAVIS & SHIRTLIFF JOINS THE FIGHT AGAINST COVID-19

In showing solidarity in the fight against the global pandemic of the COVID-19, Davis & Shirliff donated 15 hand washing stations to 10 police stations in Nairobi's Kasarani area. The donation was done in partnership with the Ruaraka Business Community that provided the tanks used to fabricate the hand washing stations.



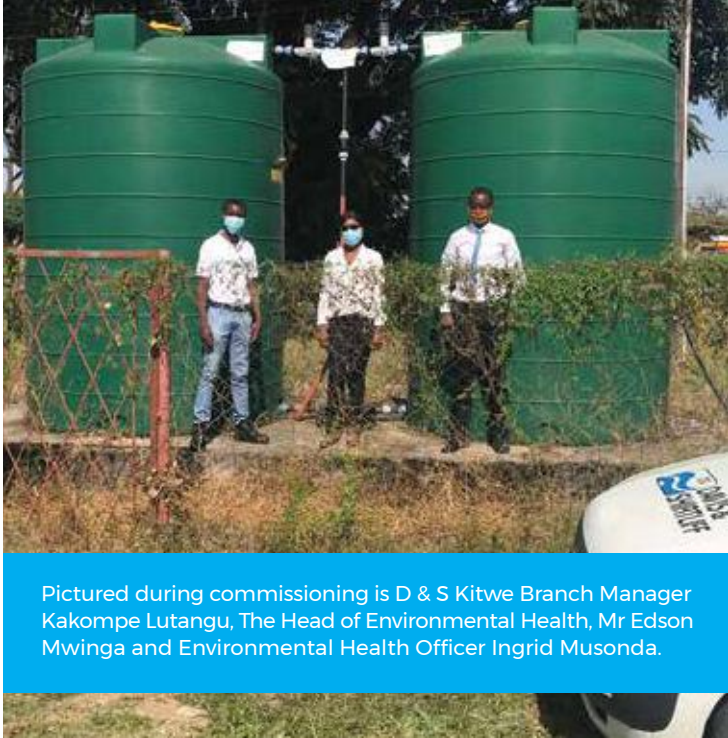
15

Number of hand washing stations D&S donated in Kasarani

The move was lauded by the Deputy OCS of Ruaraka Police station, for the noble act that will go a long way in boosting the country's response to the pandemic. With this, Davis & Shirliff has added to its commitment to support communities control the pandemic while also bolstering the company's belief of sustainably improving people's lives and having a COVID free country.



SUPPORTING HOSPITALS FIGHT COVID-19 IN ZAMBIA



Pictured during commissioning is D & S Kitwe Branch Manager Kakompe Lutangu, The Head of Environmental Health, Mr Edson Mwinga and Environmental Health Officer Ingrid Musonda.

Experts at the World Health Organization’s Africa office have warned that surging hospital admissions for Covid-19 would divert already limited resources to tackle major health issues in the region, worsening the impact of coronavirus. In its continued support to supplement Governments efforts, and support health care workers in the fight against Covid-19, Davis & Shirliff Zambia, in partnership with World Vision Zambia, have installed a water chlorination system in one of Kitwe’s Covid-19 isolation centers.

1,300
Approximate daily patient traffic at Kitwe Teaching Hospital

Kitwe Teaching Hospital is a 3rd level referral hospital serving the second largest populated city in Zambia. It has 664 bed capacity and daily patient traffic of up to 1,300. In a bid to make sure that the hospital’s water is properly disinfected, D&S donated and installed Klorman inline Chlorination systems. The units are connected to 3no. 10,000 litre tanks which supply water to the various areas within the facility including the isolation center.

As a result, the installed units will ensure a reliable and totally effective solution for continuous disinfection of water at the health facility.

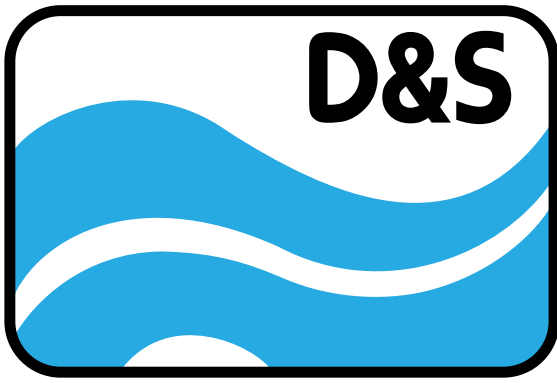
UGANDA DONATION TO COVID19 FIGHT

In solidarity with the Ugandan Government during the Covid-19 outbreak, Davis & Shirliff donated 1000 Kgs of Chlorine to the country’s Ministry of Health. The chemical that was delivered to the Ministry’s headquarters in Kampala by Commercial Manager, Joseph Luyima is to be used in the disinfection of surfaces and floors in hospitals and quarantine centers across the country. The donation which was lauded by Ministry officials and staff for bridging part of the gap in the response efforts, will go a long way in boosting the country’s response to the pandemic.

1,000
Number of KGs in Chlorine donated by D&S to Uganda’s Ministry of Health

With this, D&S Uganda has added to its commitment to support the government’s efforts to control the pandemic while also bolstering the company’s belief of sustainably improving people’s lives and having a Covid-free Uganda.





DAVIS & SHIRTLIFF

Solar

know H₂O



Pumping Solutions for Every Need!

PARTNERS

These projects and efforts were made possible with the help and support of our partners



BRANCHES

KENYA - NAIROBI

Nairobi - Head Office
Tel: (254 20) 696 8000
headoffice@dayliff.com

Nairobi - Westlands
Tel: (254) 711 079 683/2/7/8/9
wldoffice@dayliff.com

Nairobi - Downtown
Tel: (254) 715 439 392
downtown@dayliff.com

Eastleigh
Tel: (254) 711 079 645
eastleigh@dayliff.com

Utawala
Tel: (254) 780 575 745
utawala@dayliff.com

Nairobi - Karen
Tel: (254) 726 442 342
karen@dayliff.com

Ongata Rongai
Tel: (254 20) 240 0146
ongatarongai@dayliff.com

Kiambu
Tel: (254) 701 646 309
kiambu@dayliff.com

Githurai
Tel: (254) 758 727 332
githurai@dayliff.com

KENYA - EASTERN

Muranga
Tel: (254) 780 377 682
muranga@dayliff.com

Thika
Tel: (254) 719 867 504
thika@dayliff.com

Kitengela
Tel: (254) 733 610 011
kitengela@dayliff.com

Machakos
Tel: (254) 712 650 283
machakos@dayliff.com

Kitui
Tel: (254) 701 683 289
kitui@dayliff.com

Embu
Tel: (254) 780 455 512
embu@dayliff.com

Meru
Tel: (254 64) 313 1033
meru@dayliff.com

Nyeri
Tel: (254) 799 496 253
nyeri@dayliff.com

Nanyuki
Tel: (254 62) 203 0018
nanyuki@dayliff.com

Garissa
Tel: (254) 715 494 838
garissa@dayliff.com

Marsabit
Tel: (254) 725 250 684
marsabit@dayliff.com

Wajir
Tel: (254) 780 523 728
wajir@dayliff.com

KENYA - WESTERN

Naivasha
Tel: (254 50) 203 0510
naivasha@dayliff.com

Lodwar
Tel: (254) 724 248 692
lodwar@dayliff.com

Eldoret
Tel: (254) 715 590 000
eldoret@dayliff.com

Nakuru
Tel: (254 51) 221 3248
nkroffice@dayliff.com

Narok
Tel: (254) 701 683 283
narok@dayliff.com

Kakamega
Tel: (254 56) 203 1889
kakamega@dayliff.com

Kitale
Tel: (254) 725 801 268
kitale@dayliff.com

Bungoma
Tel: (254) 740 048 514
bungoma@dayliff.com

Kisumu
Tel: (254) 724 352 504
ksmoffice@dayliff.com

Kisii
Tel: (254 58) 203 0949
kisii@dayliff.com

Kericho
Tel: (254) 780 703 197
kericho@dayliff.com

KENYA COAST

Mombasa - Main Office
Tel: (254 41) 249 0868
mombasa@dayliff.com

Mombasa - Downtown
Tel: (254) 780 567 379
mombasadowntown@dayliff.com

Malindi
Tel: (254 42) 212 0425
mldoffice@dayliff.com

Diani
Tel: (254 40) 320 2181
dianooffice@dayliff.com

Lamu
Tel: (254 20) 265 1052
lamu@dayliff.com

Nyali
Tel: (254 20) 244 3357
nyali@dayliff.com

Voi
Tel: (254 20) 202 8284
voi@dayliff.com

Mtwapa
Tel: (254) 798 478 113
mtwapa@dayliff.com

Mariakani
Tel: (254) 723 357 488
mariakani@dayliff.com

UGANDA

Kampala - Main Office
Tel: (256) 783 065 273
UGEnquiries@dayliff.com

Kampala - Kitgum House
Tel: (256 414) 346 337
kitgum@dayliff.com

Kampala - Nakasero
Tel: (256 392) 734 633
nakasero@dayliff.com

Kampala - Shauri Yako
Tel: (256 414) 660 770
shauriyako@dayliff.com

Gulu
Tel: (256 471) 433 041
gulu@dayliff.com

Mbarara
Tel: (256 753) 940 080
d&smbarara@dayliff.com

Jinja
Tel: (256 392) 001 556
jinja@dayliff.com

TANZANIA

Dar es Salaam - Main Office
Tel: (255 22) 211 2515
daressalaam@dayliff.com

Dar es Salaam - Kariakoo
Tel: (255 22) 218 4867
kariakoo@dayliff.com

Arusha
Tel: (255 27) 254 7317
arusha@dayliff.com

Zanzibar
Tel: (255 24) 223 4660
zanzibar@dayliff.com

Mwanza
Tel: (255 28) 254 1971
d&smwanza@dayliff.com

Dodoma
Tel: (255) 753 506 530
dodoma@dayliff.com

SOUTH SUDAN

Juba
Tel: (211) 927 000 020
juba@dayliff.com

ZAMBIA

Lusaka - Main Office
Tel: (260 211) 845 010/1
lusaka@dayliff.com

Lusaka - ChaChaCha
Tel: (260 211) 842 350
chachacha@dayliff.com

Ndola
Tel: (260 212) 610 936
ndola@dayliff.com

Kitwe
Tel: (260 212) 221 747
kitwe@dayliff.com

Livingstone
Tel: (260 213) 320 002
livingstone@dayliff.com

Solwezi
Tel: (260 218) 821 822
solwezi@dayliff.com

Chipata
Tel: (260 216) 222 636
chipata@dayliff.com

RWANDA

Kigali
Tel: (250 252) 504 039
kigali@dayliff.co.rw

Rubavu
Tel: (243 814) 326 631
rubavu@dayliff.com

Gakiriro
Tel: (250 781) 182 374
gakiriro@dayliff.com

DRC

Lubumbashi
Tel: (243) 978 115 412
drc@dayliff.com

ZIMBABWE

Harare
Tel: (263) 24 257 6246
zimbabwe@dayliff.com

ETHIOPIA (Associate)

Addis Ababa
Tel: (251 11) 668 7925
ethiopia@dayliff.com



THE APP FROM
D&S DAVIS & SHIRTLIFF
know H₂O through experience

D&S FLO

Water & Energy Solutions with You, Everywhere You GO!



DAYLIFF

FULL PRODUCT SUPPORT
FROM THE **DAYLIFF APP**
Available For **iOS** and **Android**

Available for iOS and Android

